

**Klaipėdos valstybinis muzikinis teatras skelbia konkursą
orkestro valtornų grupės koncertmeisterio pavaduotojo vietai užimti**

Pretendentui keliami kvalifikaciniai reikalavimai:

- aukštasis muzikinis išsilavinimas;
- geri muzikiniai duomenys;
- ansamblinio grojimo įgūdžiai;
- valstybinės ir mažiausiai vienos užsienio kalbos mokėjimas;
- muzikinio teatro struktūros ir darbo specifikos išmanymas.

Perklauso programa:

- Wolfgang Amadeus Mozart – Koncertas valtornai Nr. 4: I dalis.
- Orkestriniai sunkumai (natos pridedamos):
Ludwig van Beethoven – ištrauka iš Simfonijos Nr.7;
Antonín Dvořák – ištraukos iš Simfonijos Nr. 9 „Iš naujojo pasaulio“;
Gioacchino Rossini – operos „Šarka vagilė“ (*La gazza ladra*) uvertiūra;
Richard Strauss – ištraukos iš simfoninės poemos „Tilio Ulenšpygelio linksmosios išdaigos“ (*Till Eulenspiegels lustige Streiche*);
Richard Wagner – ištrauka iš operos „Lohengrinas“.

Pretendentas privalo pateikti:

- laisvos formos prašymą dalyvauti konkurse;
- išsilavinimą bei kitus profesinius pasiekimus patvirtinančių dokumentų kopijas;
- gyvenimo aprašymą, nurodant vardą, pavardę, gimimo datą, gyvenamosios vietos adresą, telefono numerį, elektroninio pašto adresą, išsilavinimą, darbo patirtį, savo privalumų sąrašą (nurodyti dalykines savybes).

Pirmasis konkurso etapas:

Pretendentų prašome pateikti savo CV iki **2024 m. spalio 30 d.** el. paštu ieva.scerbiakaite@kvmt.lt.

Pretendentai, negalintys gyvai dalyvauti perklausoje, el. paštu ieva.scerbiakaite@kvmt.lt iki 2024 m. spalio 30 d. privalo pateikti savo CV ir nuorodą į atliekamo kūrinio su akompanimentu aukštos kokybės vaizdo įrašą.

Perklausa vyks 2024 m. lapkričio 6 d. nuo 14.30 val. Klaipėdos valstybiniame muzikiniame teatre (Danės g. 19, Klaipėda).

Detalesnė perklauso informacija pretendentams bus pranešta asmeniškai elektroniniu paštu, nurodytu gyvenimo aprašyme.

Išsamesnė informacija teikiama telefonu +370 675 52500.

BEETHOVEN : Sinfonie Nr.7

1. Satz

I. Horn in A
Vivace

The image shows a musical score for the first horn part of the first movement of Beethoven's Symphony No. 7. The score is written in treble clef with a 6/8 time signature. It consists of three staves of music. The first staff begins with a series of eighth notes, marked with *sf* (sforzando) dynamics. The second staff continues the melodic line with various rhythmic patterns and dynamics, including *ff* (fortissimo). The third staff features a more complex rhythmic pattern, starting with a *p* (piano) dynamic and a *cresc.* (crescendo) marking. The score concludes with a double bar line.

DVORÁK : Sinfonie Nr. 9

3. Satz

*III. Horn in E
molto vivace*

f *sfz* *ff*

4. Satz

*I. Horn in E
Allegro con fuoco un poco sostenuto*

p *f* *p*

stringendo *cresc.* *molto cresc.* *ff*

ROSSINI : Die Diebische Elster

Ouverture

I. Horn in E

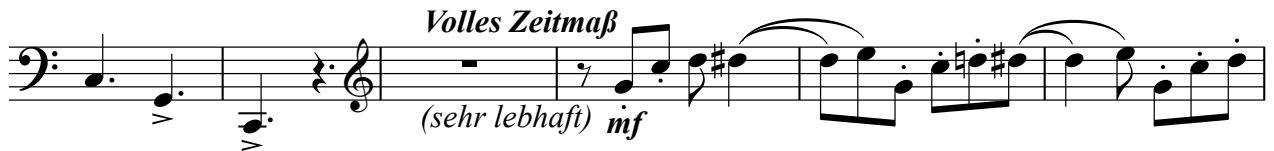
Maestoso marciale

The musical notation is written on a single staff in treble clef with a common time signature (C). It begins with a fermata over a whole rest, followed by a dynamic marking of *p*. The first measure contains a quarter note G4, a quarter note A4, and a quarter note B4. The second measure contains a quarter note C5, a quarter note B4, and a quarter note A4. The third measure contains a quarter note G4, a quarter note F4, and a quarter note E4. The fourth measure contains a quarter note D4, a quarter note C4, and a quarter note B3. The fifth measure contains a quarter note A3, a quarter note G3, and a quarter note F3. The sixth measure contains a quarter note E3, a quarter note D3, and a quarter note C3. The seventh measure contains a quarter note B2, a quarter note A2, and a quarter note G2. The eighth measure contains a quarter note F2, a quarter note E2, and a quarter note D2. The ninth measure contains a quarter note C2, a quarter note B1, and a quarter note A1. The tenth measure contains a quarter note G1, a quarter note F1, and a quarter note E1. The piece concludes with a double bar line.

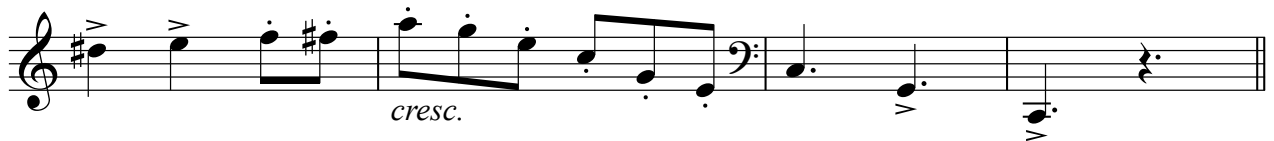
STRAUSS : Till Eulenspiegel

I.Horn in F
Gemächlich

allmählich lebhafter



III.Horn in D
Volles Zeitmaß (sehr lebhaft)



WAGNER : Lohengrin

3. Akt, Vorspiel

*I. Horn in D
Molto vivace
unisono*

First staff of music, starting with a rest followed by a triplet of eighth notes. The dynamic marking *ff* is placed below the first note of the triplet. The staff continues with a series of eighth and quarter notes, ending with another triplet of eighth notes.

Second staff of music, beginning with a dotted quarter note followed by eighth notes. It features a slur over a group of notes and ends with a triplet of eighth notes.

Third staff of music, starting with a slur over eighth notes. It includes a triplet of eighth notes, a note with an accent (^), and a note with a breath mark (^).

Fourth staff of music, beginning with a slur over eighth notes and a triplet of eighth notes. It continues with eighth and quarter notes, ending with a triplet of eighth notes.

Fifth staff of music, starting with a dotted quarter note and eighth notes. It features a slur over a group of notes and ends with a triplet of eighth notes.

Sixth staff of music, beginning with a slur over eighth notes. It includes a triplet of eighth notes, a note with an accent (^), and a note with a breath mark (^).

Seventh staff of music, starting with a slur over eighth notes. It includes a triplet of eighth notes and a slur over a group of notes. The key signature changes to G major, indicated by the text *in G*. The staff concludes with a double bar line and a fermata.